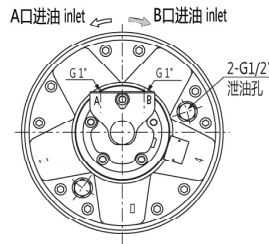
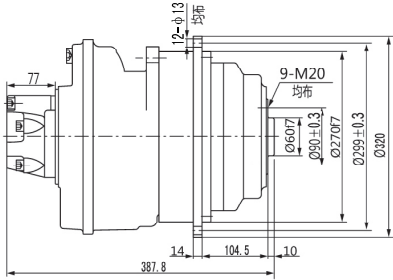
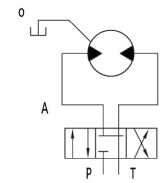


GFR3.2 液压传动装置 GFR3.2 Hydraulic Transmission Devices

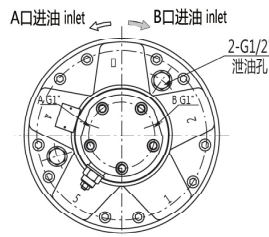
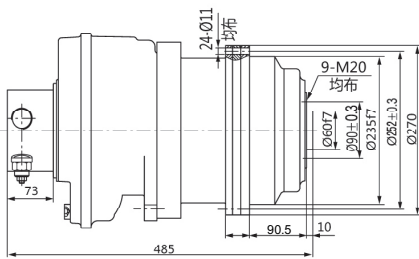
◆无制动器 / Without brake



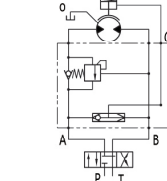
液压原理图
Hydraulic schematic diagram



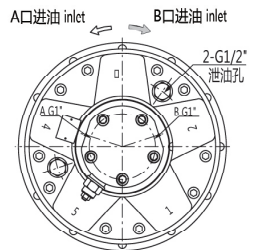
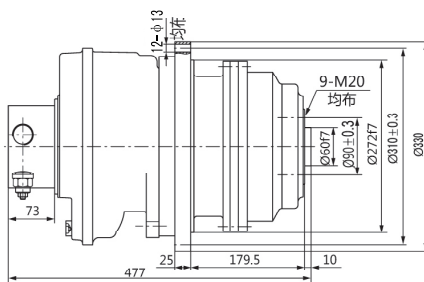
◆带制动器 (外置式) / With brake and external installation



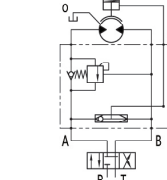
液压原理图
Hydraulic schematic diagram



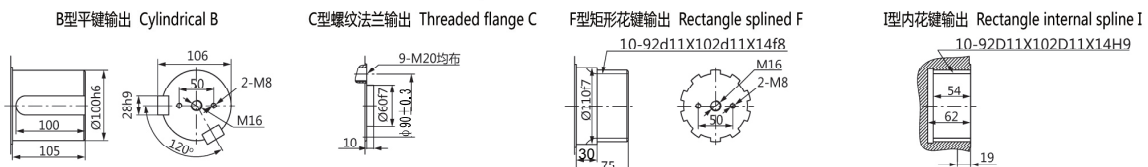
◆带制动器 (内置式) / With brake and internal installation



液压原理图
Hydraulic schematic diagram



◆输出轴尺寸 / Shaft dimensions



型号 Model	总排量 (ml/r) Total displacement	额定扭矩 (N.m) Rated torque 20MPa	转速范围 Speed	总效率 Total efficiency	液压马达型号 Hydraulic motor	行星减速器型号 Poanetary gearbox	制动器型号 Brake
GFR3-1700	1735	4823	0-90	0.88-0.9	GM2-350	C3-5	Z3
GFR3-1900	1908	5306	0-80	0.88-0.9	GM2-350	C3-5.5	Z3
GFR3-2300	2338	6492	0-75	0.88-0.9	GM2-420	C3-5.5	Z3

注：外形联结尺寸及输出轴有特殊要求，请与我们联系 / Note: Please contact us if there are any requirements from customer