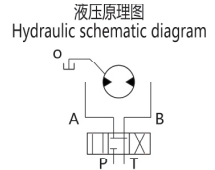
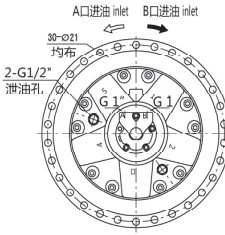
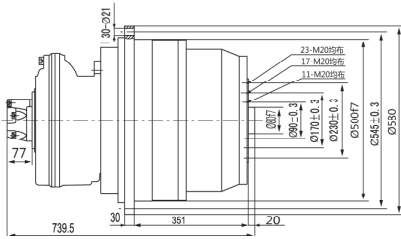


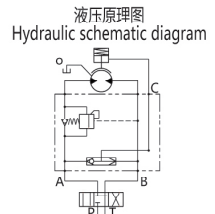
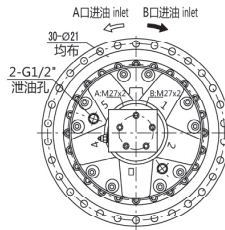
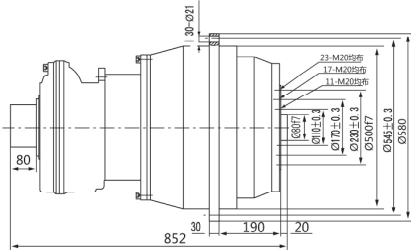
GFR56 液压传动装置

GFR56 Hydraulic Transmission Devices

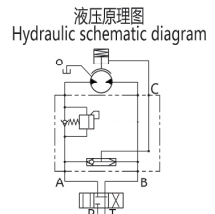
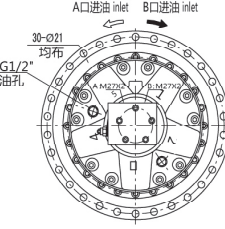
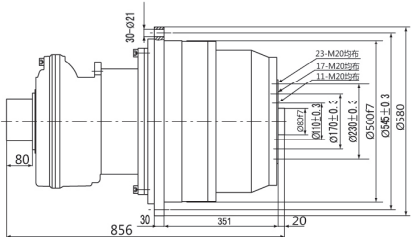
◆ 无制动器 / Without brake



◆ 带制动器 (外置式) / With brake and external installation

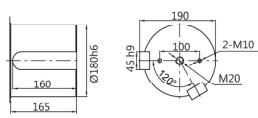


◆ 带制动器 (内置式) / With brake and internal installation

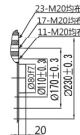


◆ 输出轴尺寸 / Shaft dimensions

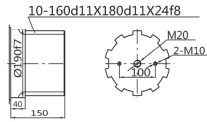
B型平键输出 Cylindrical B



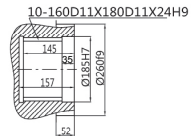
C型螺纹法兰输出 Threaded flange C



F型矩形花键输出 Rectangle splined F



I型内花键输出 Rectangle internal spline I



型号 Model	总排量 (ml/r) Total displacement	额定扭矩 (N.m) Rated torque		转速范围 Speed	总效率 Total efficiency	液压马达型号 Hydraulic motor	行星减速器型号 Poanetary gearbox	制动器型号 Brake
		16MPa	20MPa					
GFR56-12000	12320	27067	33834	0-14	0.88-0.9	GM4-600	C56-20	Z5
GFR56-16000	15860	34918	43648	0-14	0.88-0.9	GM4-800	C56-20	Z5
GFR56-18000	18080	39706	49632	0-14	0.88-0.9	GM4-900	C56-20	Z5
GFR56-20000	20440	45056	56320	0-14	0.88-0.9	GM4-1000	C56-20	Z5
GFR56-22000	22204	48885	61106	0-10	0.88-0.9	GM4-800	C56-28	Z5
GFR56-25000	25312	55587		0-10	0.88-0.9	GM4-900	C56-28	Z5
GFR56-28000	28616	63078		0-10	0.88-0.9	GM4-1000	C56-28	Z5

注：外形联结尺寸及输出轴有特殊要求，请与我们联系 / Note: Please contact us if there are any requirements from customer