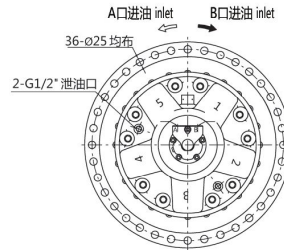
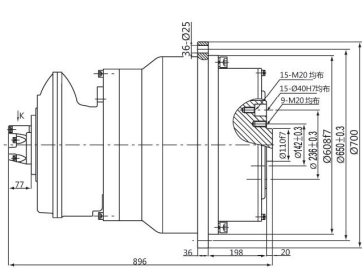
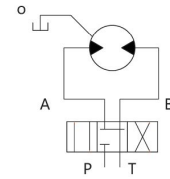


GFR67 液压传动装置 GFR67 Hydraulic Transmission Devices

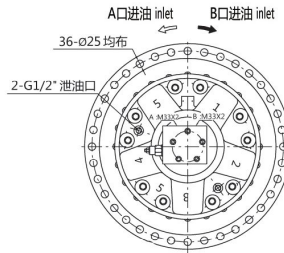
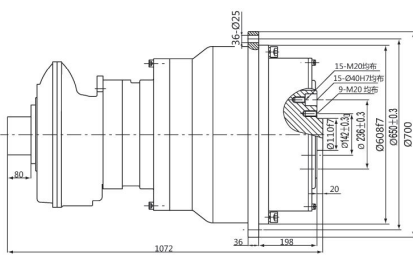
◆无制动器 / Without brake



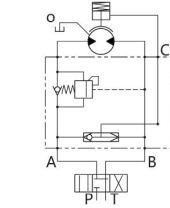
液压原理图
Hydraulic schematic diagram



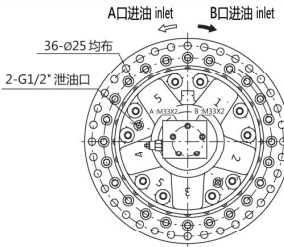
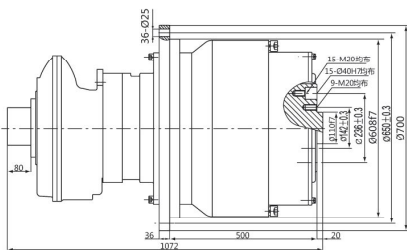
◆带制动器 (外置式) / With brake and external installation



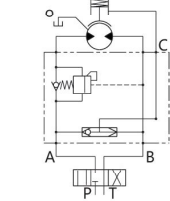
液压原理图
Hydraulic schematic diagram



◆带制动器 (内置式) / With brake and internal installation

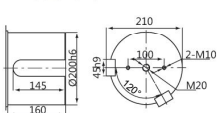


液压原理图
Hydraulic schematic diagram

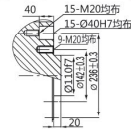


◆输出轴尺寸 / Shaft dimensions

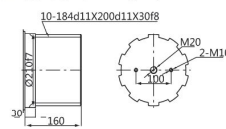
B型平键输出 Cylindrical B



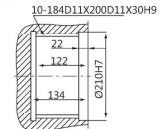
C型螺纹法兰输出 Threaded flange C



F型矩形花键输出 Rectangle splined F



I型内花键输出 Rectangle internal spline I



型号 Model	总排量 (ml/r) Total displacement	额定扭矩 (N.m) Rated torque		转速范围 Speed	总效率 Total efficiency	液压马达型号 Hydraulic motor	行星减速器型号 Poanetary gearbox	制动器型号 Brake
		16MPa	20MPa					
GFR67-29000	29240	64205	80256	0~13	0.88-0.9	GM5-1450	C67-20	Z6
GFR67-33000	32680	71526	89408	0~13	0.88-0.9	GM5-1600	C67-20	Z6
GFR67-36000	36320	79682	99616	0~13	0.88-0.9	GM5-1800	C67-20	Z6
GFR67-41000	40936	89887		0~9	0.88-0.9	GM5-1450	C67-28	Z6
GFR67-46000	45752	100136		0~9	0.88-0.9	GM5-1600	C67-28	Z6

注：外形联结尺寸及输出轴有特殊要求，请与我们联系 / Note: Please contact us if there are any requirements from customer